

Product Catalogue CD

Product Information and Selection System is the system, which incorporates all the information about the Gear products of any company and provides a selection system with it to select any product out of them based on the requirements specified. The main aim of the system is to replace the paper based catalogues and its advantage is to pass the product's information to more number of people. Also this helps to include vast information in only one CD.

Has two parts:

- 1) Information Pages containing detail information about all the products i.e. Transmission Products and Material Handling Equipments, which are manufactured in the company.
- 2) Selection System: Selection System of Geared Motor and Gear Reducer (Transmission Products) is available. Feed the parameters according to your need and based on that the suitable product will be selected for you.
 - Parameters are: Application Type, Service Factor, Motor HP values, RPM speed etc.
 - After submitting your parameter values, the result page containing all the necessary details of the selected product together with its pdf drawing and views of different mounting positions will be shown.
 - Also there is facility to take print of your selection.
 - Acrobat Reader Auto Installation facility is provided. System will automatically detect the availability of Acrobat Reader on the user's machine and will install it if not available for the user. (Acrobat Reader is needed to view drawings).

System also provides mailing facility.

Users of the system:

Clients of the supplier company or customers willing to purchase products from the company.

Client List: (1) Power Build Ltd, Anand.

System Requirements:

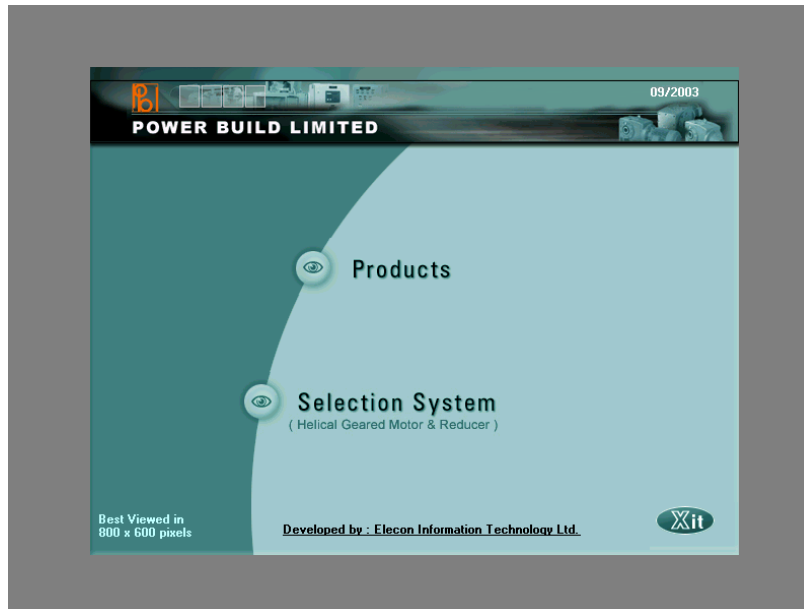
Operating System: Windows 98/NT/2000

Hardware Configuration: Pentium processor with minimum 600 MHz, 64MB RAM, 100 MB free space on hard disk.

Software:(1) Acrobat Reader required for viewing drawings.

Sample Screens:

Main screen:



Selection Screen:



Parameters Entry Page:

Product Catalogue CD - Microsoft Word

Transmission Product Selection System (Helical Geared Motor)

POWER BUILD LIMITED HELICAL GEARED MOTOR

[Click for more Technical Details](#)

① Application Type

- Agitator and Mixers
- Blowers
- Brewing & Distilling
- Clay working machinery
- Compressors
- Conveyors
- Crane Hoists
- Crushers
- Elevators
- Fans
- Feeders

Duration of service: 4 hours/day ②

Load: U

U : - Uniform Load
H : - Heavy Shock Load
M : - Medium Shock Load

Note :If Load Shock value is U*, M* or H* select duration of service as 24hours/day

Service Factor: 0.8 For SF >1.65, Refer to Works

Choose Required Service Factor: 1 ③

(OHL Calculation is Optional)

⑦ Actual Power (in KW): 0.55 Pitch Radius (in mm):

Output speed in RPM: 1.1 ⑥ Output RPM: 1.1

Show Product Details

Selected Product Code : 93C-42.1P-D80K4

Calculate Overhung load Output Torque: 464.391 Kg-m

Exit First calculate the OVERHUNG LOAD and then press 'SHOW PRODUCT' button to view the product details.

Page 4 Sec 1 4/5 At 1.5" Ln 4 Col 1 REC TRK EXT OVR

Result Page:

Product Catalogue CD - Microsoft Word

Power Build Ltd. - Selection System (Helical Product Result)

POWER BUILD LIMITED HELICAL GEARED MOTOR & REDUCER (SELECTION RESULTS)

DETAILS OF THE PRODUCT SELECTED

FOOT MOUNTED HELICAL GEARED MOTOR

SELECTION RESULTS AND DETAILS:

PRODUCT CODE : 93C-42.1P-D80K4 (Standard product)

LOAD : U

HP/KW : 0.75(0.55)

RPM : 1.1

PRODUCT TYPE : Composite GB with Foot Mounting

AXIAL LOAD : 3260 Kg. WEIGHT : 338 Kg.

OVERHUNG LOAD : PERMISSIBLE OHL

OUTPUT TORQUE : 464.391 Kg-m

OIL CAPACITY (IN LITRES) FOR DIFFERENT MOUNTING POSITIONS :

Gear Type	B5	V1	V3
42	0.75	2.25	2.0

Gear Type	B3	B6 and B7	B8	V5	V6
93	10.0	20.0	21.0	30.0	28.0

Different Mounting Positions

B3, B6, B7, B8, V5, V6

Note : Click to Zoom.

Install Acrobat Reader

Page 4 Sec 1 3/5 At 1.1" Ln 2 Col 2 REC TRK EXT OVR

Product Information Page:

